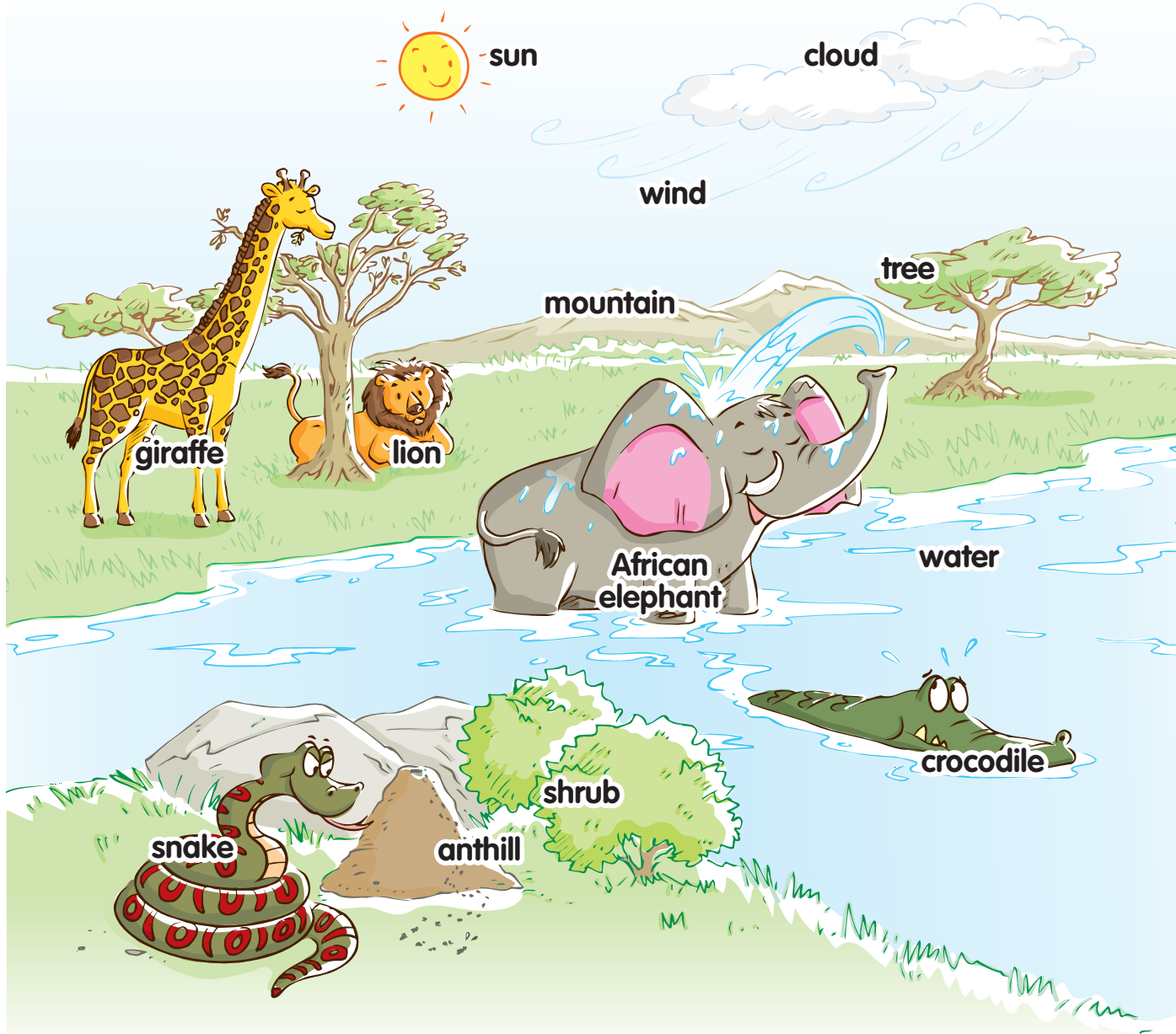


A. Look at the African savannah ecosystem. Identify the biotic and abiotic elements. Write them under the correct headings.



Biotic Elements
(living things)

Abiotic Elements
(non-living things)

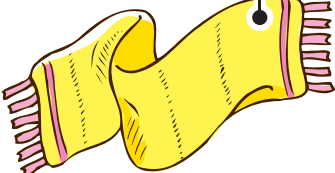


B. Identify the property of air each picture shows. Write the letters.

Properties of Air

- A** Air has weight.
- B** Air expands when heated.
- C** Air takes up space.
- D** Air can be compressed.
- E** Air pushes on objects.
- F** Air has an insulating property.
- G** Air resists things moving through it.

1. **traps warmth**



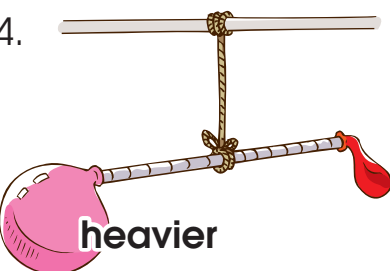
2. **flies a kite**




3. **falls slowly**




4. **heavier**



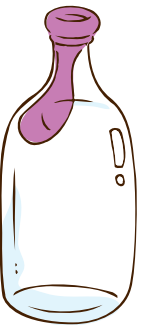
5. **A small canister can store enough air for a scuba diver.**



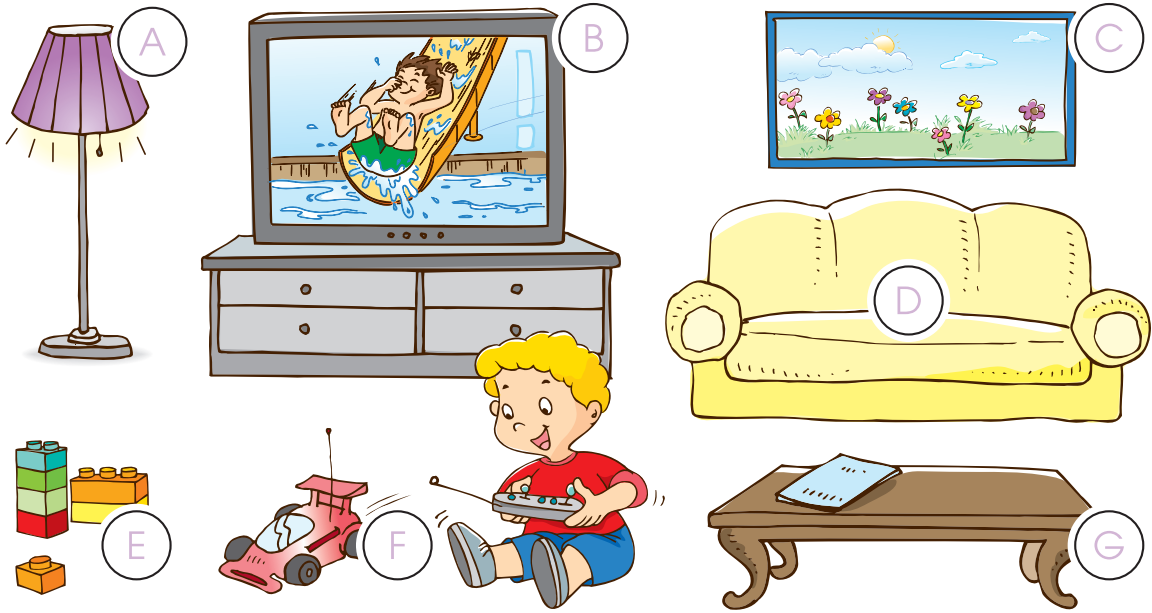
6. **A deformed table tennis ball will recover its shape when it is put in hot water.**



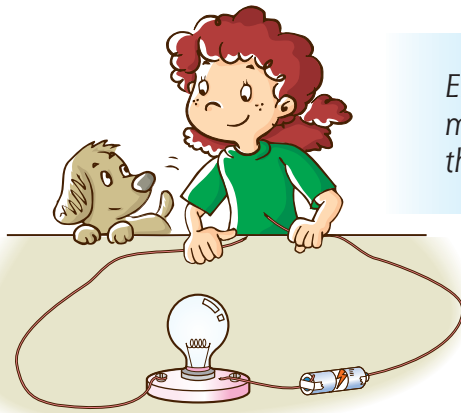
7. **It is hard to blow up a balloon in an empty bottle.**



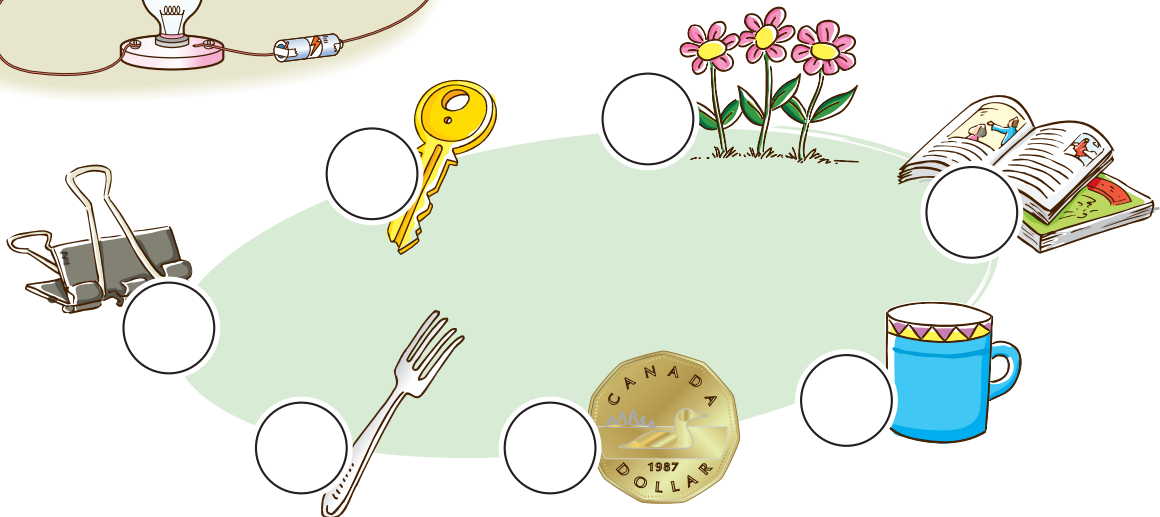
C. Check the pictures that show evidence of electricity being used.



D. Nicole is looking for a conductor to bridge her circuit and make the bulb glow. Help her identify the objects. Write "C" for conductors or "I" for insulators.

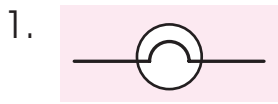


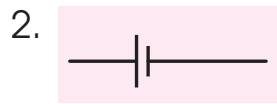
Electricity is a form of energy that flows through some materials called conductors. An insulator is a substance that electricity cannot flow through.

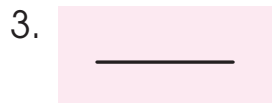


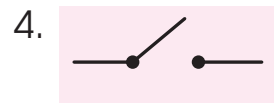
E. Identify the symbols with the help of the given words and complete the diagrams.

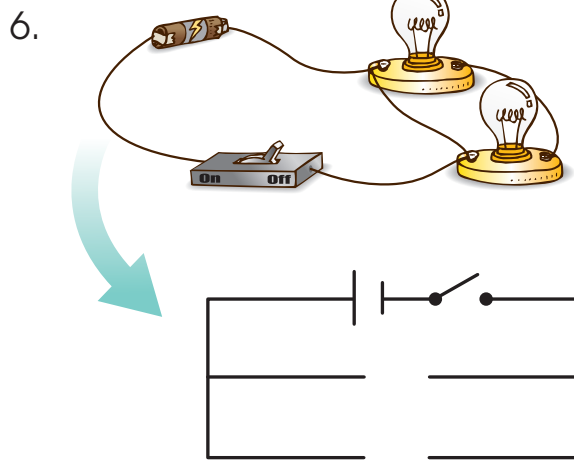
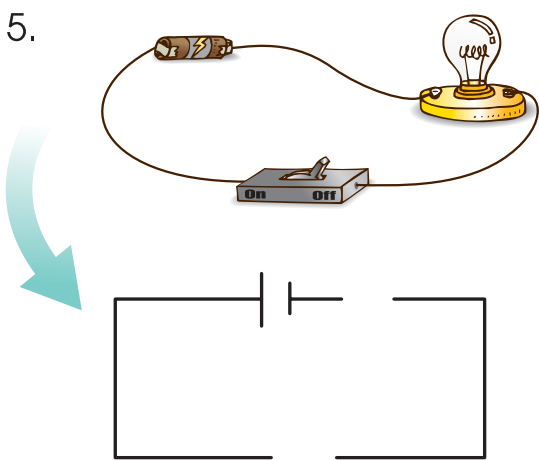
cell bulb wire switch







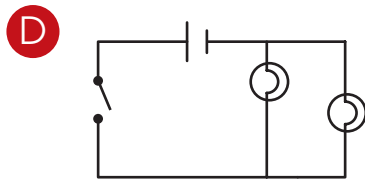
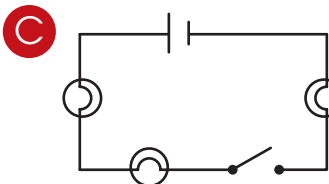
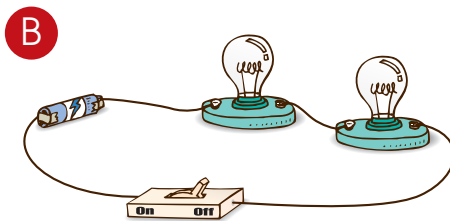
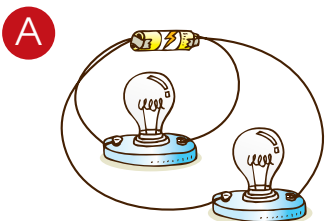




F. Are the circuits in series or in parallel? Write “series” or “parallel”.



Series circuits have one path for electricity to flow along and parallel circuits have more than one path.



- A** _____
- B** _____
- C** _____
- D** _____